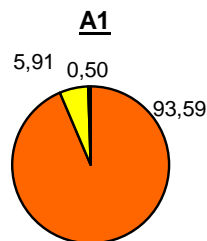


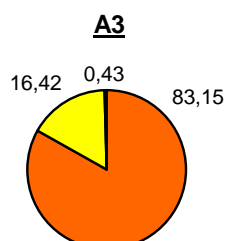
Promet na autocestama u nadležnosti HAC-a u mjesecu kolovozu 2019. godine

| Autocesta | | OSTVARENI PROMET | | | | | Usporedba 2019./2018. | | |
|-----------|--------------|------------------|-------------------|--------------------|--------------|--------------|-----------------------|-------------|-------------------------------|
| oznaka | duljina u km | broj motocikala | broj lakih vozila | broj teških vozila | ukupno 2019. | ukupno 2018. | °PMDP 2018. | °PMDP 2019. | odnos prometa 2019./2018. (%) |
| A1 | 415,7 | 5.491 | 1.026.281 | 64.830 | 1.096.602 | 1.037.629 | 33.472 | 35.374 | 5,68 |
| A3 | 306,4 | 4.337 | 846.682 | 167.235 | 1.018.254 | 960.635 | 30.988 | 32.847 | 6,00 |
| A4 | 96,4 | 4.197 | 643.009 | 89.906 | 737.112 | 695.069 | 22.422 | 23.778 | 6,05 |
| A5 | 56,2 | 804 | 112.497 | 17.669 | 130.970 | 123.097 | 3.971 | 4.225 | 6,40 |
| A10 | 6,7 | 1.327 | 129.129 | 12.390 | 142.846 | 138.205 | 4.458 | 4.608 | 3,36 |
| A11 | 29,7 | 834 | 178.001 | 14.222 | 193.057 | 174.353 | 5.624 | 6.228 | 10,73 |

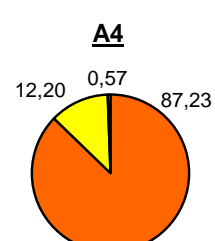
| Udio vozila po kategorijama | | | |
|-----------------------------|-----------------|------------------|---------------|
| oznaka | laka vozila (%) | teška vozila (%) | motocikli (%) |
| A1 | 93,59 | 5,91 | 0,50 |
| A3 | 83,15 | 16,42 | 0,43 |
| A4 | 87,23 | 12,20 | 0,57 |
| A5 | 85,90 | 13,49 | 0,61 |
| A10 | 90,40 | 8,67 | 0,93 |
| A11 | 92,20 | 7,37 | 0,43 |



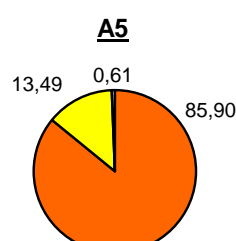
■ laka vozila (%)
■ teška vozila (%)
■ motocikli (%)



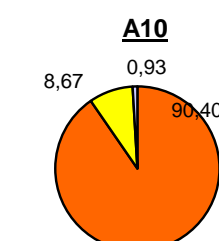
■ laka vozila (%)
■ teška vozila (%)
■ motocikli (%)



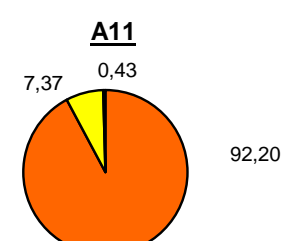
■ laka vozila (%)
■ teška vozila (%)
■ motocikli (%)



■ laka vozila (%)
■ teška vozila (%)
■ motocikli (%)

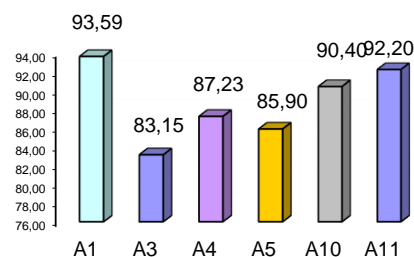


■ laka vozila (%)
■ teška vozila (%)
■ motocikli (%)

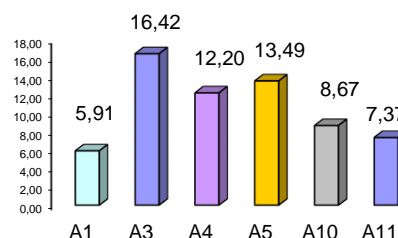


■ laka vozila (%)
■ teška vozila (%)
■ motocikli (%)

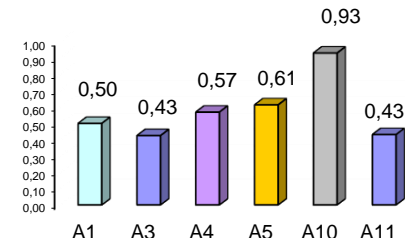
Udio lakih vozila na svim autocestama (%)



Udio teških vozila na svim autocestama (%)



Udio motocikala na svim autocestama (%)



° PMDP - prosječni mjesečni dnevni promet

laka vozila - osobna vozila, osobna vozila s prikolicom, kombiji; teška vozila - kamioni, kamioni s prikolicom, tegljači, autobusi

Napomena: točnost podataka sukladna je točnosti instaliranih klasifikatora