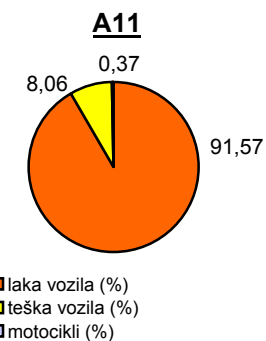
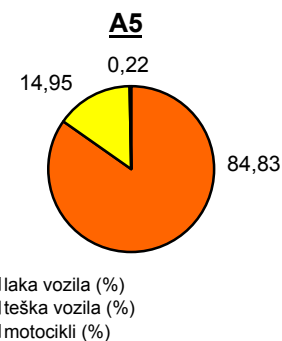
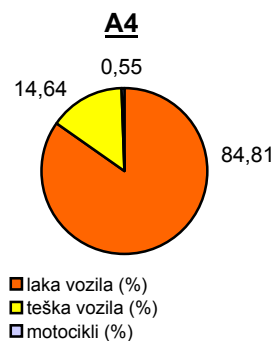
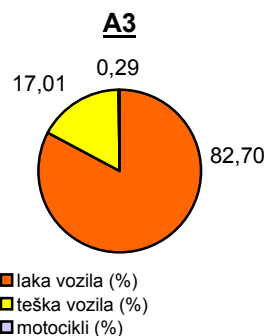
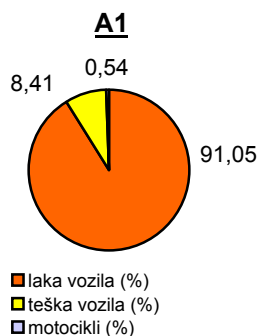


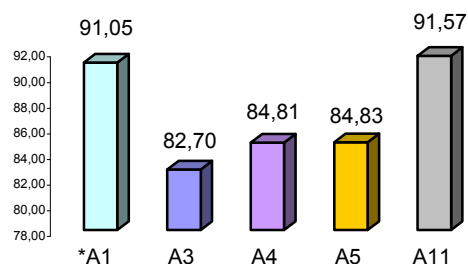
## Promet na autocestama u nadležnosti HAC-a u mjesecu RUJNU 2011. godine

Autocesta		OSTVARENI PROMET					Usporedba 2011./2010.		
oznaka	duljina u km	broj motocikala	broj lakih vozila	broj teških vozila	ukupno 2011.	ukupno 2010.	°PMDP 2010.	°PMDP 2011.	odnos prometa 2011./2010.
*A1	399,8	2.068	346.129	31.954	380.151	346.642	11.555	12.672	9,67%
A3	306,4	1.685	474.951	97.651	574.287	543.251	18.108	19.143	5,71%
A4	96,4	2.091	320.805	55.382	378.278	351.658	11.722	12.609	7,57%
A5	53,6	192	72.528	12.779	85.499	81.145	2.705	2.850	5,37%
A11	9,0	254	62.443	5.499	68.196	46.538	1.551	2.273	46,54%

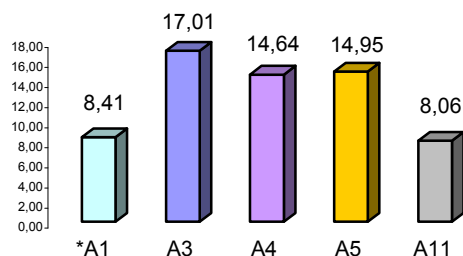
Udio vozila po kategorijama			
oznaka	laka vozila (%)	teška vozila (%)	motocikli (%)
*A1	91,05	8,41	0,54
A3	82,70	17,01	0,29
A4	84,81	14,64	0,55
A5	84,83	14,95	0,22
A11	91,57	8,06	0,37



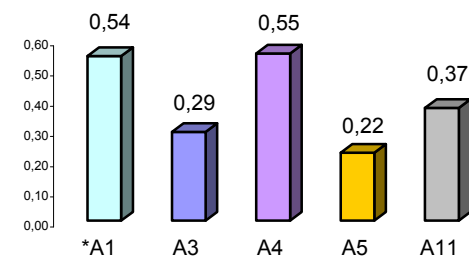
Udio lakih vozila na svim autocestama (%)



Udio teških vozila na svim autocestama (%)



Udio motocikala na svim autocestama (%)



\* A1 od čvora Bosiljevo II do čvora Vrgorac (dionica Ravča - Vrgorac puštena je u promet 30.06.2011. godine)

° PMDP - prosječni mjesečni dnevni promet

laka vozila - osobna vozila, osobna vozila s prikolicom, kombiji; teška vozila - kamioni, kamioni s prikolicom, tegljači, autobusi

**Napomena:** točnost podataka sukladna je točnosti instaliranih klasifikatora