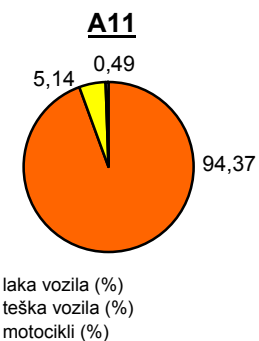
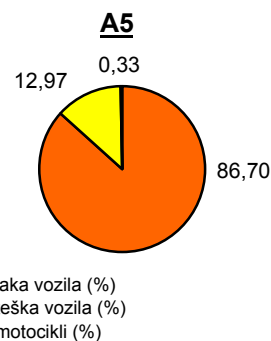
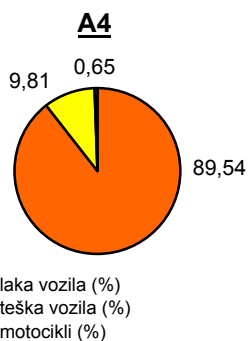
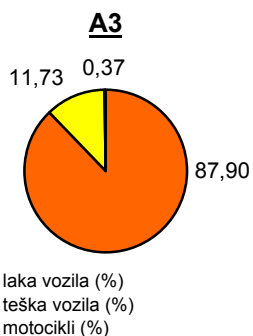
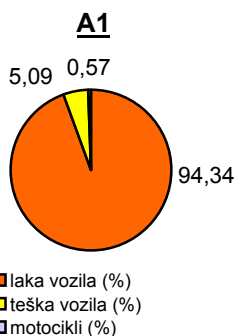


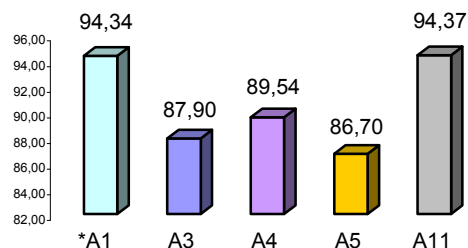
Promet na autocestama u nadležnosti HAC-a u mjesecu KOLOVOZU 2011. godine

Autocesta	oznaka	duljina u km	OSTVARENI PROMET				Usporedba 2011./2010.			
			broj motocikala	broj lakih vozila	broj teških vozila	ukupno 2011.	ukupno 2010.	°PMDP 2010.	°PMDP 2011.	odnos prometa 2011./2010.
*A1		399,8	4.757	787.917	42.545	835.219	812.637	26.214	26.943	2,78%
A3		306,4	2.795	657.490	87.713	747.998	790.928	25.514	24.129	-5,43%
A4		96,4	3.491	476.552	52.208	532.251	536.280	17.299	17.169	-0,75%
A5		53,6	311	80.527	12.046	92.884	88.875	2.867	2.996	4,51%
A11		9,0	263	50.227	2.732	53.222	54.057	1.744	1.717	-1,54%

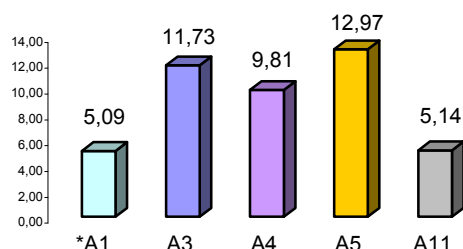
Udio vozila po kategorijama			
oznaka	laka vozila (%)	teška vozila (%)	motocikli (%)
*A1	94,34	5,09	0,57
A3	87,90	11,73	0,37
A4	89,54	9,81	0,65
A5	86,70	12,97	0,33
A11	94,37	5,14	0,49



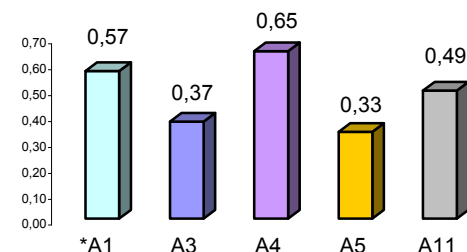
Udio lakih vozila na svim autocestama (%)



Udio teških vozila na svim autocestama (%)



Udio motocikala na svim autocestama (%)



* A1 od čvora Bosiljevo II do čvora Vrgorac (dionica Ravča - Vrgorac puštena je u promet 30.06.2011. godine)

° PMDP - prosječni mjesečni dnevni promet

laka vozila - osobna vozila, osobna vozila s prikolicom, kombiji; teška vozila - kamioni, kamioni s prikolicom, tegljači, autobusi

Napomena: točnost podataka sukladna je točnosti instaliranih klasifikatora