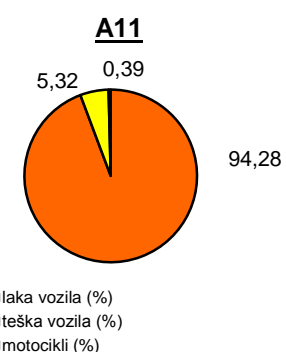
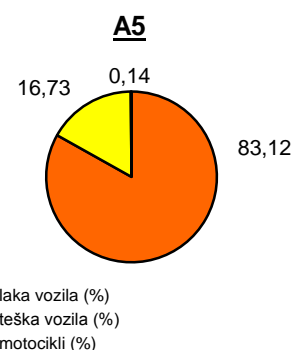
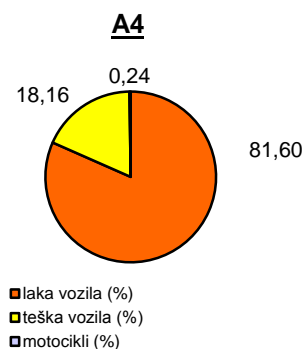
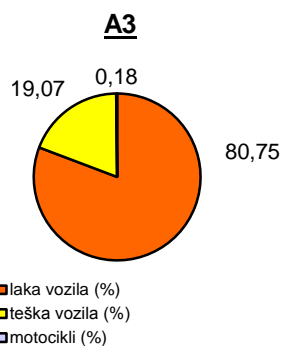
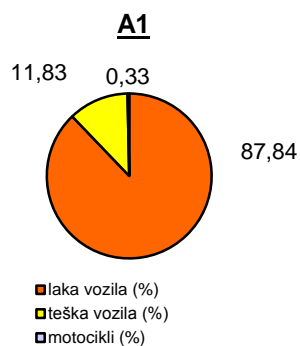


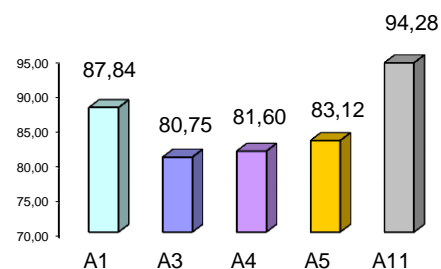
Promet na autocestama u nadležnosti HAC-a u mjesecu TRAVNJU 2013. godine

Autocesta		OSTVARENI PROMET					Usporedba 2013./2012.		
oznaka	duljina u km	broj motocikala	broj lakih vozila	broj teških vozila	ukupno 2013.	ukupno 2012.	°PMDP 2012.	°PMDP 2013.	odnos prometa 2013./2012.
A1	399,8	652	174.421	23.489	198.562	216.500	7.217	6.619	-8,29%
A3	306,4	894	394.403	93.132	488.429	535.446	17.848	16.281	-8,78%
A4	96,4	655	218.600	48.638	267.893	273.604	9.120	8.930	-2,09%
A5	53,6	107	61.414	12.363	73.884	77.693	2.590	2.463	-4,91%
A11	9,0	199	47.842	2.702	50.743	54.467	1.816	1.691	-6,86%

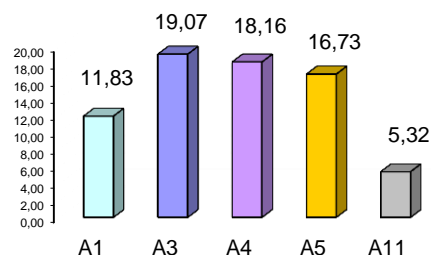
Udio vozila po kategorijama			
oznaka	laka vozila (%)	teška vozila (%)	motocikli (%)
A1	87,84	11,83	0,33
A3	80,75	19,07	0,18
A4	81,60	18,16	0,24
A5	83,12	16,73	0,14
A11	94,28	5,32	0,39



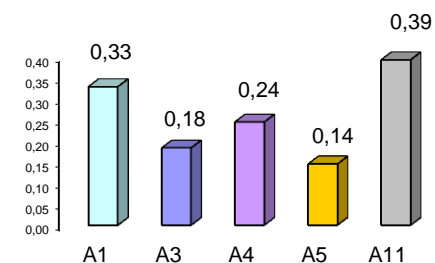
Udio lakih vozila na svim autocestama (%)



Udio teških vozila na svim autocestama (%)



Udio motocikala na svim autocestama (%)



° PMDP - prosječni mjesečni dnevni promet

laka vozila - osobna vozila, osobna vozila s prikolicom, kombiji; teška vozila - kamioni, kamioni s prikolicom, tegljači, autobusi

Napomena: točnost podataka sukladna je točnosti instaliranih klasifikatora