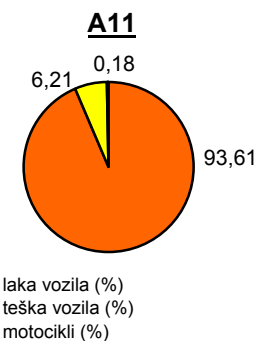
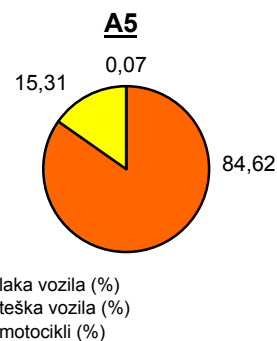
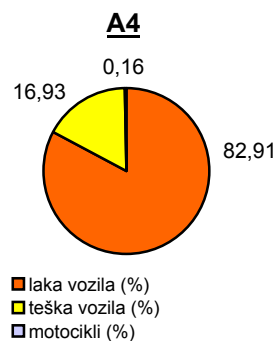
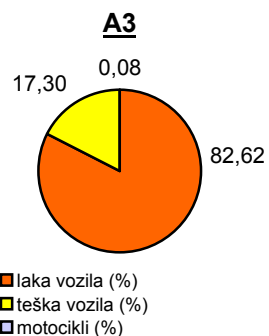
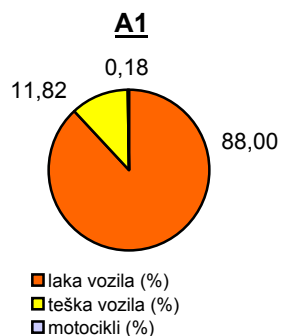


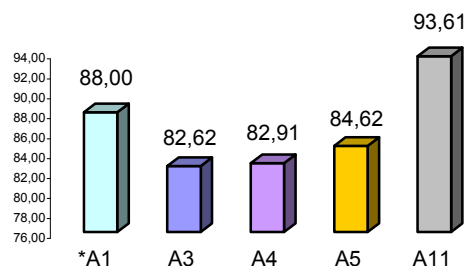
Promet na autocestama u nadležnosti HAC-a u mjesecu LISTOPADU 2011. godine

Autocesta		OSTVARENI PROMET					Usporedba 2011./2010.		
oznaka	duljina u km	broj motocikala	broj lakih vozila	broj teških vozila	ukupno 2011.	ukupno 2010.	°PMDP 2010.	°PMDP 2011.	odnos prometa 2011./2010.
*A1	399,8	396	190.795	25.623	216.814	224.994	7.258	6.994	-3,64%
A3	306,4	450	438.067	91.713	530.230	539.418	17.401	17.104	-1,70%
A4	96,4	528	269.792	55.100	325.420	302.852	9.769	10.497	7,45%
A5	53,6	64	72.650	13.144	85.858	81.697	2.635	2.770	5,09%
A11	9,0	116	61.320	4.071	65.507	57.623	1.859	2.113	13,68%

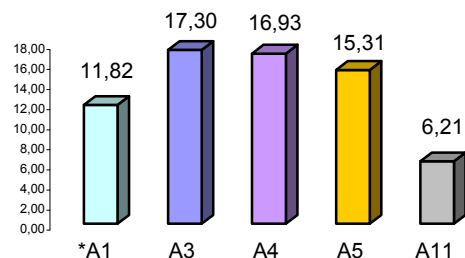
Udio vozila po kategorijama			
oznaka	laka vozila (%)	teška vozila (%)	motocikli (%)
*A1	88,00	11,82	0,18
A3	82,62	17,30	0,08
A4	82,91	16,93	0,16
A5	84,62	15,31	0,07
A11	93,61	6,21	0,18



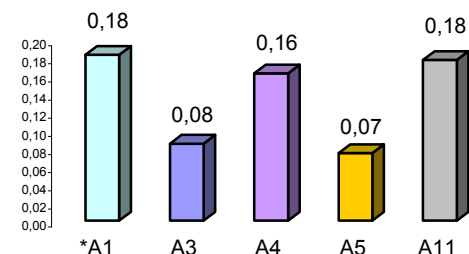
Udio lakih vozila na svim autocestama (%)



Udio teških vozila na svim autocestama (%)



Udio motocikala na svim autocestama (%)



* A1 od čvora Bosiljevo II do čvora Vrgorac (dionica Ravča - Vrgorac puštena je u promet 30.06.2011. godine)

° PMDP - prosječni mjesečni dnevni promet

laka vozila - osobna vozila, osobna vozila s prikolicom, kombiji; teška vozila - kamioni, kamioni s prikolicom, tegljači, autobusi

Napomena: točnost podataka sukladna je točnosti instaliranih klasifikatora