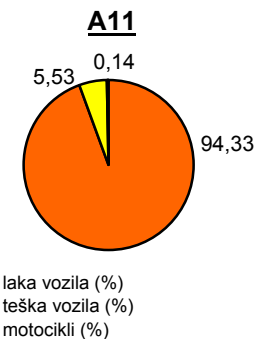
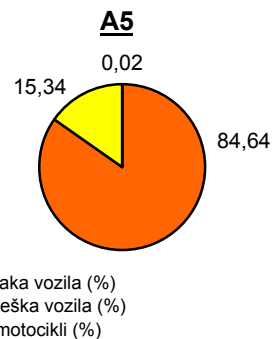
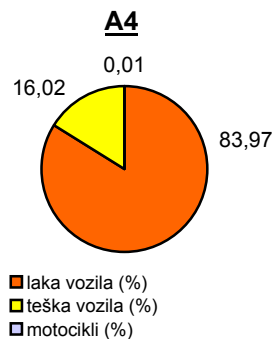
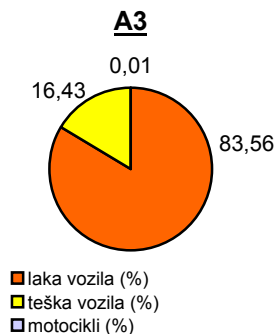
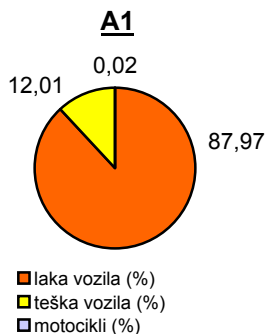


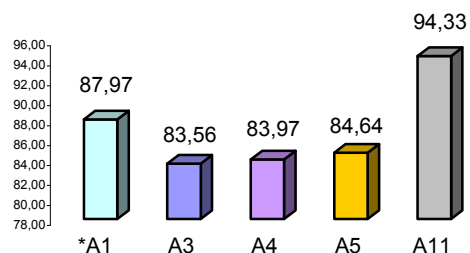
## Promet na autocestama u nadležnosti HAC-a u mjesecu SIJEČNJU 2011. godine

Autocesta		OSTVARENI PROMET					Usporedba 2011./2010.		
oznaka	duljina u km	broj motocikala	broj lakih vozila	broj teških vozila	ukupno 2010.	ukupno 2011.	°PMDP 2010.	°PMDP 2011.	odnos prometa 2011./2010.
*A1	390,1	32	114.919	15.697	129.082	130.648	4.164	4.214	1,21%
A3	306,4	58	366.239	72.006	423.628	438.303	13.665	14.139	3,46%
A4	96,4	33	192.415	36.703	217.711	229.151	7.023	7.392	5,25%
A5	53,6	10	52.080	9.439	60.550	61.529	1.953	1.985	1,62%
A11	9,0	65	44.117	2.586	27.149	46.768	876	1.509	72,26%

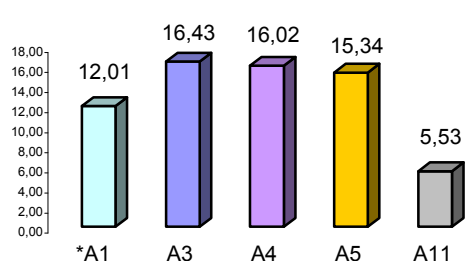
Udio vozila po kategorijama			
oznaka	laka vozila (%)	teška vozila (%)	motocikli (%)
*A1	87,97	12,01	0,02
A3	83,56	16,43	0,01
A4	83,97	16,02	0,01
A5	84,64	15,34	0,02
A11	94,33	5,53	0,14



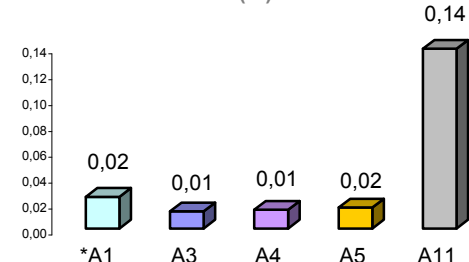
Udio lakih vozila na svim autocestama (%)



Udio teških vozila na svim autocestama (%)



Udio motocikala na svim autocestama (%)



\* A1 od čv. Bosiljevo II - čv. Ravča

° PMDP - prosječni mjesečni dnevni promet

laka vozila - osobna vozila, osobna vozila s prikolicom, kombiji; teška vozila - kamioni, kamioni s prikolicom, tegljači, autobusi

**Napomena:** točnost podataka je sukladna točnosti instaliranih klasifikatora

