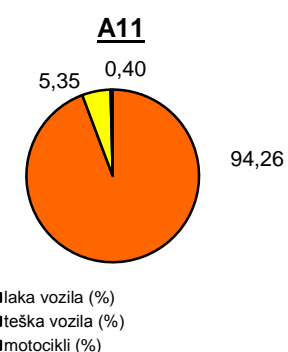
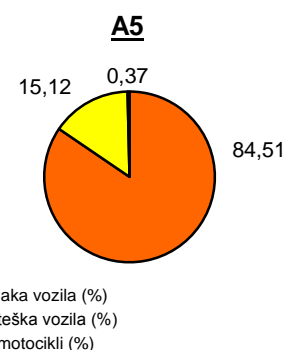
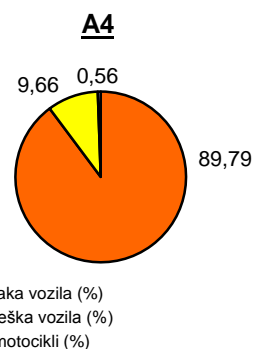
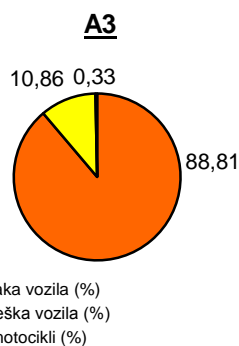
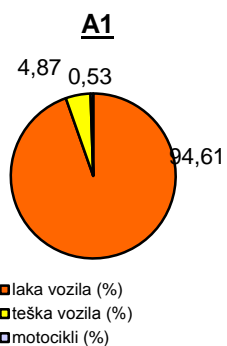


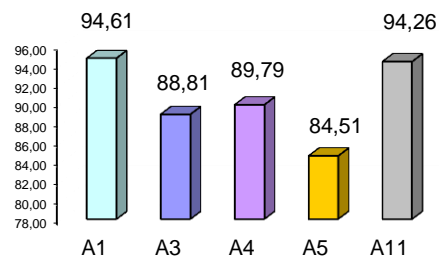
Promet na autocestama u nadležnosti HAC-a u mjesecu KOLOVOZU 2013. godine

Autocesta		OSTVARENI PROMET					Usporedba 2013./2012.		
oznaka	duljina u km	broj motocikala	broj lakih vozila	broj teških vozila	ukupno 2013.	ukupno 2012.	°PMDP 2012.	°PMDP 2013.	odnos prometa 2013./2012.
A1	399,8	4.695	846.002	43.539	894.236	824.148	26.585	28.846	8,51%
A3	306,4	2.777	742.820	90.813	836.410	768.822	24.801	26.981	8,79%
A4	96,4	2.964	478.913	51.513	533.390	509.238	16.427	17.206	4,74%
A5	53,6	345	78.832	14.104	93.281	88.458	2.853	3.009	5,47%
A11	9,0	193	45.945	2.606	48.744	81.289	2.622	1.572	-40,03%

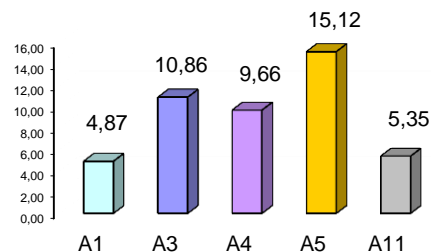
Udio vozila po kategorijama			
oznaka	laka vozila (%)	teška vozila (%)	motocikli (%)
A1	94,61	4,87	0,53
A3	88,81	10,86	0,33
A4	89,79	9,66	0,56
A5	84,51	15,12	0,37
A11	94,26	5,35	0,40



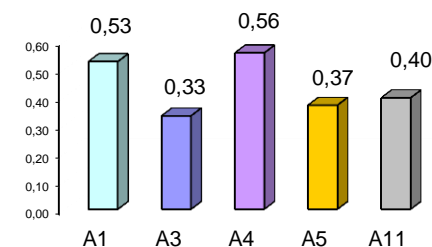
Udio lakih vozila na svim autocestama (%)



Udio teških vozila na svim autocestama (%)



Udio motocikala na svim autocestama (%)



° PMDP - prosječni mjesečni dnevni promet

laka vozila - osobna vozila, osobna vozila s prikolicom, kombiji; teška vozila - kamioni, kamioni s prikolicom, tegljači, autobusi

Napomena: točnost podataka sukladna je točnosti instaliranih klasifikatora