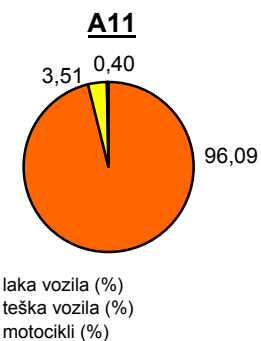
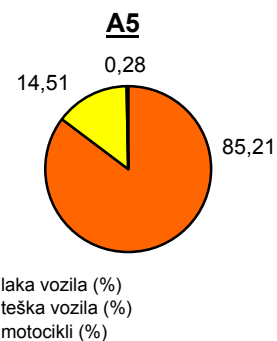
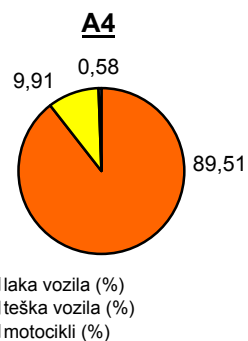
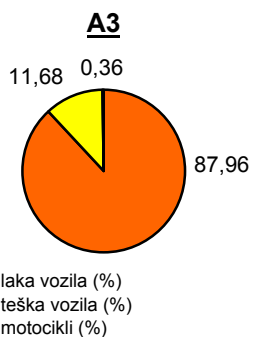
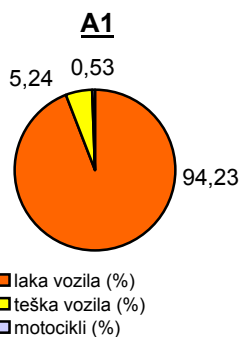


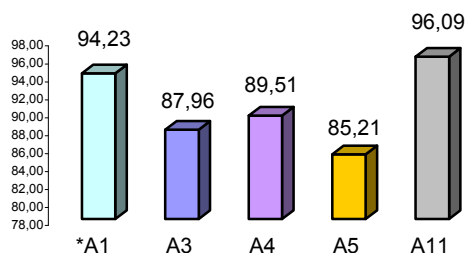
Promet na autocestama u nadležnosti HAC-a u mjesecu KOLOVOZU 2012. godine

Autocesta		OSTVARENI PROMET					Usporedba 2012./2011.		
oznaka	duljina u km	broj motocikala	broj lakih vozila	broj teških vozila	ukupno 2012.	ukupno 2011.	°PMDP 2011.	°PMDP 2012.	odnos prometa 2012./2011.
*A1	399,8	4.398	776.530	43.221	824.149	835.218	26.943	26.585	-1,33%
A3	306,4	2.748	676.250	89.824	768.822	747.997	24.129	24.801	2,78%
A4	96,4	2.967	455.824	50.447	509.238	532.251	17.169	16.427	-4,32%
A5	53,6	252	75.370	12.836	88.458	92.884	2.996	2.853	-4,77%
A11	9,0	325	78.111	2.853	81.289	53.222	1.717	2.622	52,74%

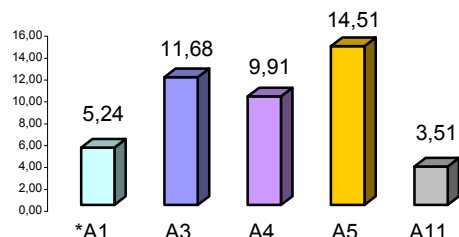
Udio vozila po kategorijama			
oznaka	laka vozila (%)	teška vozila (%)	motocikli (%)
*A1	94,23	5,24	0,53
A3	87,96	11,68	0,36
A4	89,51	9,91	0,58
A5	85,21	14,51	0,28
A11	96,09	3,51	0,40



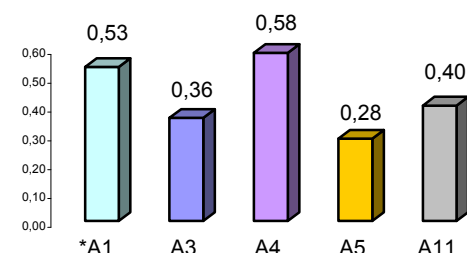
Udio lakih vozila na svim autocestama (%)



Udio teških vozila na svim autocestama (%)



Udio motocikala na svim autocestama (%)



° PMDP - prosječni mjesečni dnevni promet

laka vozila - osobna vozila, osobna vozila s prikolicom, kombiji; teška vozila - kamioni, kamioni s prikolicom, tegljači, autobusi

Napomena: točnost podataka sukladna je točnosti instaliranih klasifikatora

