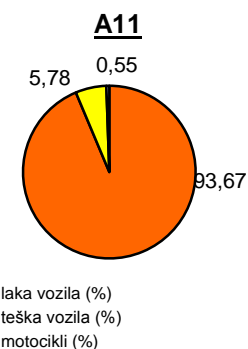
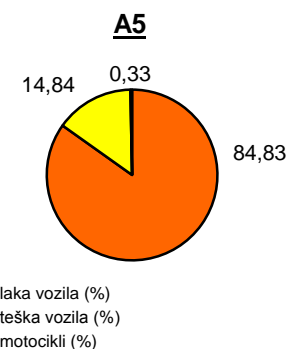
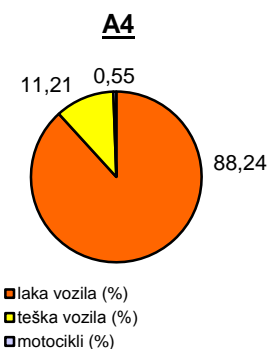
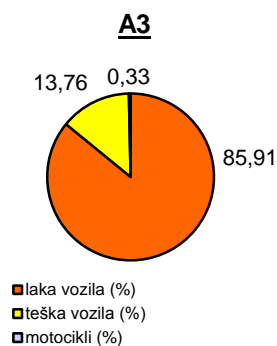
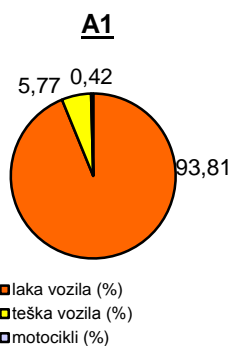


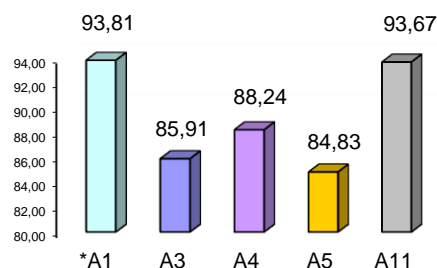
Promet na autocestama u nadležnosti HAC-a u mjesecu SRPNJU 2012. godine

Autocesta		OSTVARENI PROMET					Usporedba 2012./2011.		
oznaka	duljina u km	broj motocikala	broj lakih vozila	broj teških vozila	ukupno 2012.	ukupno 2011.	°PMDP 2011.	°PMDP 2012.	odnos prometa 2012./2011.
*A1	399,8	2.988	664.837	40.880	708.705	778.472	25.112	22.861	-8,96%
A3	306,4	2.369	609.392	97.609	709.370	736.939	23.772	22.883	-3,74%
A4	96,4	2.627	418.089	53.106	473.822	530.130	17.101	15.285	-10,62%
A5	53,6	285	74.015	12.947	87.247	92.594	2.987	2.814	-5,77%
A11	9,0	427	72.630	4.485	77.542	76.120	2.455	2.501	1,87%

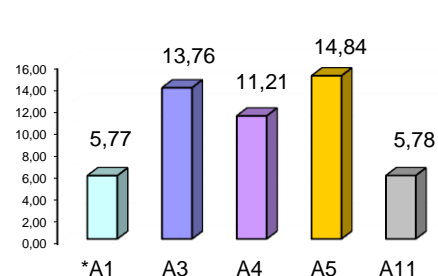
Udio vozila po kategorijama			
oznaka	laka vozila (%)	teška vozila (%)	motocikli (%)
*A1	93,81	5,77	0,42
A3	85,91	13,76	0,33
A4	88,24	11,21	0,55
A5	84,83	14,84	0,33
A11	93,67	5,78	0,55



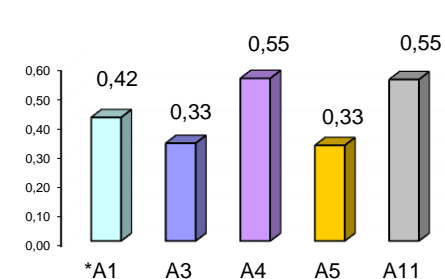
Udio lakih vozila na svim autocestama (%)



Udio teških vozila na svim autocestama (%)



Udio motocikala na svim autocestama (%)



* A1 od čvora Bosiljevo II do čvora Vrgorac (dionica Ravča - Vrgorac puštena je u promet 30.06.2011. godine)

° PMDP - prosječni mjesečni dnevni promet

laka vozila - osobna vozila, osobna vozila s prikolicom, kombiji; teška vozila - kamioni, kamioni s prikolicom, tegljači, autobusi

Napomena: točnost podataka sukladna je točnosti instaliranih klasifikatora

