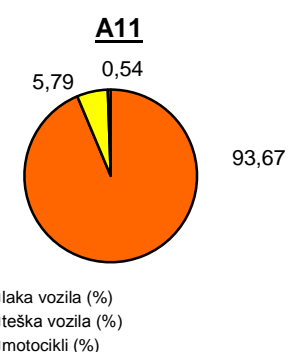
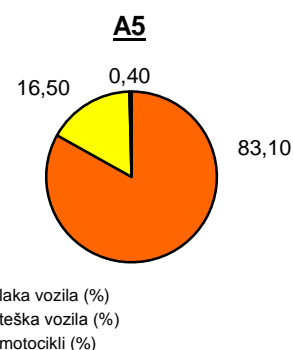
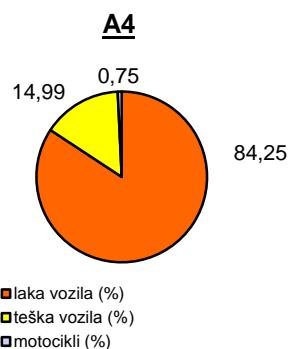
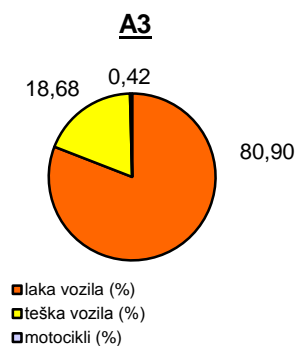
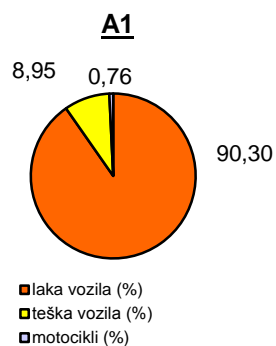


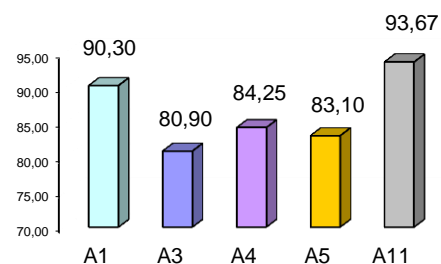
Promet na autocestama u nadležnosti HAC-a u mjesecu LIPNJU 2013. godine

Autocesta		OSTVARENI PROMET					Usporedba 2013./2012.		
oznaka	duljina u km	broj motocikala	broj lakih vozila	broj teških vozila	ukupno 2013.	ukupno 2012.	°PMDP 2012.	°PMDP 2013.	odnos prometa 2013./2012.
A1	399,8	2.962	352.277	34.899	390.138	378.859	12.629	13.005	2,97%
A3	306,4	2.115	406.316	93.838	502.269	505.314	16.844	16.742	-0,60%
A4	96,4	2.495	279.296	49.702	331.493	322.644	10.755	11.050	2,74%
A5	53,6	302	62.850	12.476	75.628	75.063	2.502	2.521	0,76%
A11	9,0	295	50.873	3.142	54.310	60.307	2.010	1.810	-9,93%

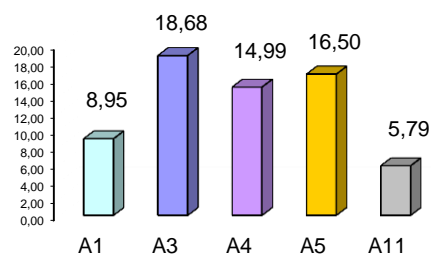
Udio vozila po kategorijama			
oznaka	laka vozila (%)	teška vozila (%)	motocikli (%)
A1	90,30	8,95	0,76
A3	80,90	18,68	0,42
A4	84,25	14,99	0,75
A5	83,10	16,50	0,40
A11	93,67	5,79	0,54



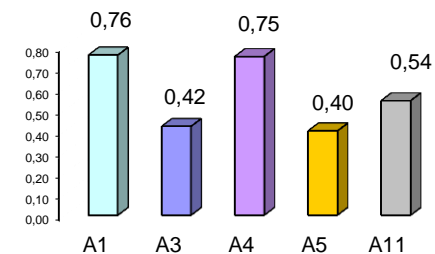
Udio lakih vozila na svim autocestama (%)



Udio teških vozila na svim autocestama (%)



Udio motocikala na svim autocestama (%)



° PMDP - prosječni mjesečni dnevni promet

laka vozila - osobna vozila, osobna vozila s prikolicom, kombiji; teška vozila - kamioni, kamioni s prikolicom, tegljači, autobusi

Napomena: točnost podataka sukladna je točnosti instaliranih klasifikatora