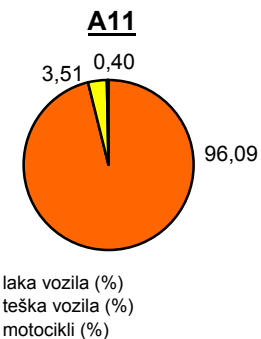
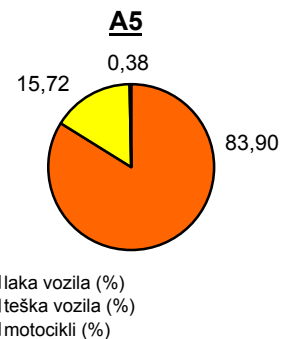
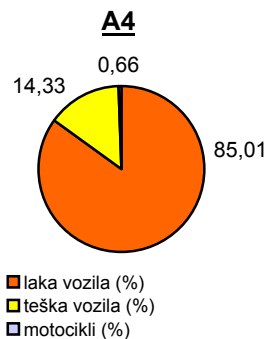
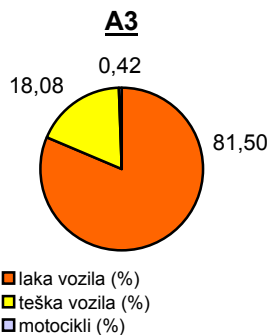
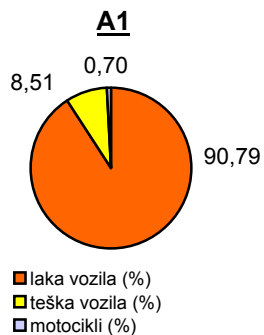


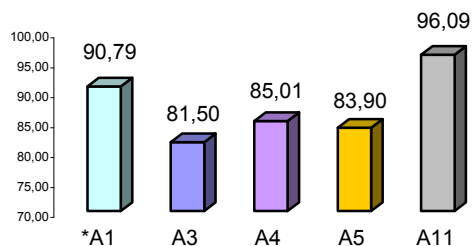
Promet na autocestama u nadležnosti HAC-a u mjesecu LIPNJU 2012. godine

Autocesta		OSTVARENI PROMET					Usporedba 2012./2011.		
oznaka	duljina u km	broj motocikala	broj lakih vozila	broj teških vozila	ukupno 2012.	ukupno 2011.	°PMDP 2011.	°PMDP 2012.	odnos prometa 2012./2011.
*A1	399,8	2.661	343.961	32.237	378.859	411.330	13.711	12.629	-7,89%
A3	306,4	2.118	411.834	91.362	505.314	531.388	17.713	16.844	-4,91%
A4	96,4	2.122	274.283	46.239	322.644	349.577	11.653	10.755	-7,70%
A5	53,6	289	62.976	11.798	75.063	82.969	2.766	2.502	-9,53%
A11	9,0	242	57.946	2.119	60.307	89.144	2.971	2.010	-32,35%

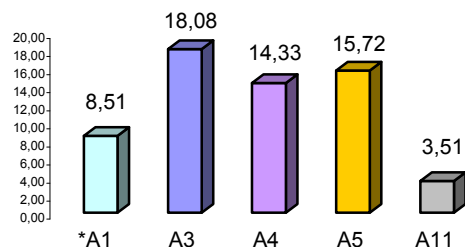
Udio vozila po kategorijama			
oznaka	laka vozila (%)	teška vozila (%)	motocikli (%)
*A1	90,79	8,51	0,70
A3	81,50	18,08	0,42
A4	85,01	14,33	0,66
A5	83,90	15,72	0,38
A11	96,09	3,51	0,40



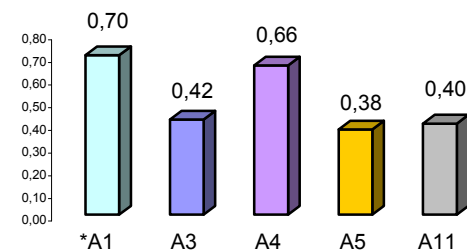
Udio lakih vozila na svim autocestama (%)



Udio teških vozila na svim autocestama (%)



Udio motocikala na svim autocestama (%)



* A1 od čvora Bosiljevo II do čvora Vrgorac (dionica Ravča - Vrgorac puštena je u promet 30.06.2011. godine)

° PMDP - prosječni mjesečni dnevni promet

laka vozila - osobna vozila, osobna vozila s prikolicom, kombiji; teška vozila - kamioni, kamioni s prikolicom, tegljači, autobusi

Napomena: točnost podataka sukladna je točnosti instaliranih klasifikatora

