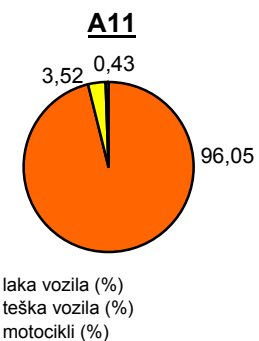
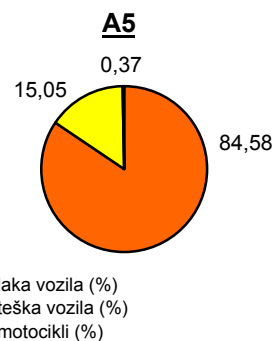
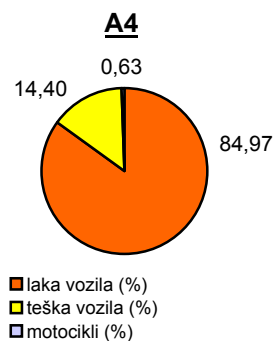
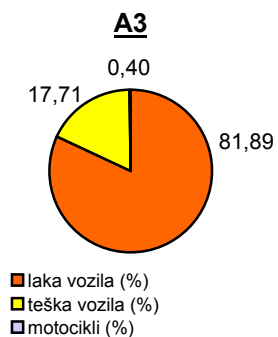
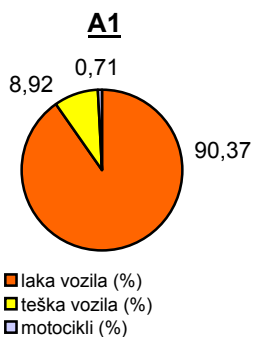


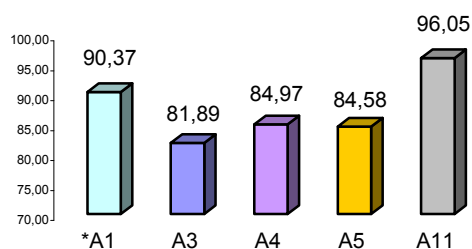
Promet na autocestama u nadležnosti HAC-a u mjesecu LIPNJU 2011. godine

Autocesta		OSTVARENI PROMET					Usporedba 2011./2010.		
oznaka	duljina u km	broj motocikala	broj lakih vozila	broj teških vozila	ukupno 2011.	ukupno 2010.	°PMDP 2010.	°PMDP 2011.	odnos prometa 2011./2010.
*A1	390,1	2.905	371.741	36.684	411.330	363.775	12.126	13.711	13,07%
A3	306,4	2.120	435.134	94.134	531.388	511.004	17.033	17.713	3,99%
A4	96,4	2.208	297.043	50.326	349.577	327.061	10.902	11.653	6,88%
A5	53,6	310	70.174	12.485	82.969	75.428	2.514	2.766	10,00%
A11	9,0	384	85.623	3.137	89.144	40.231	1.341	2.971	121,58%

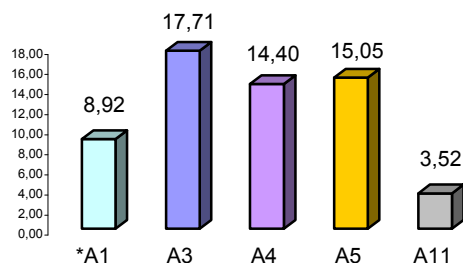
Udio vozila po kategorijama			
oznaka	laka vozila (%)	teška vozila (%)	motocikli (%)
*A1	90,37	8,92	0,71
A3	81,89	17,71	0,40
A4	84,97	14,40	0,63
A5	84,58	15,05	0,37
A11	96,05	3,52	0,43



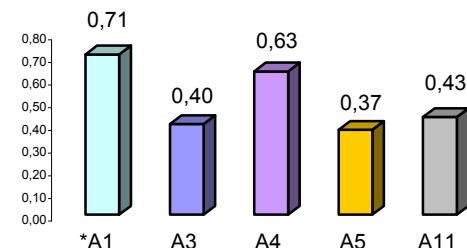
Udio lakih vozila na svim autocestama (%)



Udio teških vozila na svim autocestama (%)



Udio motocikala na svim autocestama (%)



* A1 od čv. Bosiljevo II - čv. Ravča

° PMDP - prosječni mjesečni dnevni promet

laka vozila - osobna vozila, osobna vozila s prikolicom, kombiji; teška vozila - kamioni, kamioni s prikolicom, tegljači, autobusi

Napomena: točnost podataka sukladna je točnosti instaliranih klasifikatora