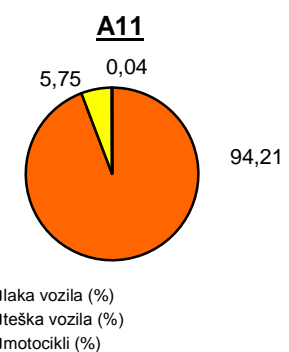
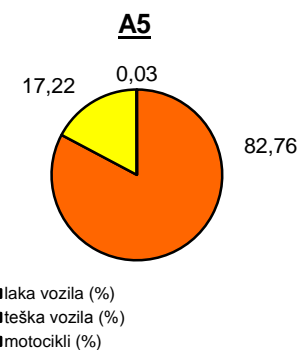
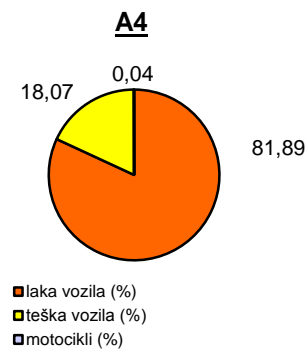
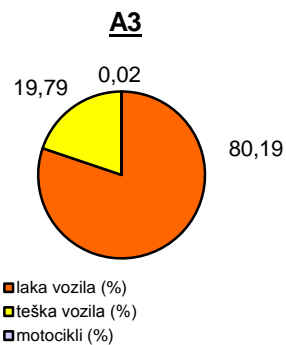
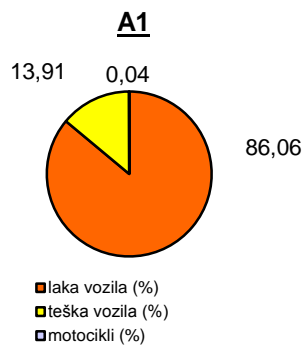


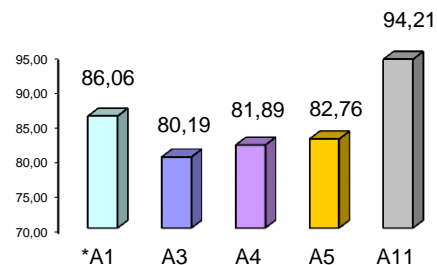
## Promet na autocestama u nadležnosti HAC-a u mjesecu OŽUJKU 2013. godine

Autocesta		OSTVARENI PROMET					Usporedba 2013./2012.		
oznaka	duljina u km	broj motocikala	broj lakih vozila	broj teških vozila	ukupno 2013.	ukupno 2012.	°PMDP 2012.	°PMDP 2013.	odnos prometa 2013./2012.
*A1	399,8	55	132.922	21.484	154.461	162.271	5.235	4.983	-4,81%
A3	306,4	107	358.338	88.440	446.885	443.093	14.293	14.416	0,86%
A4	96,4	97	203.252	44.845	248.194	279.671	9.022	8.006	-11,26%
A5	53,6	19	56.532	11.760	68.311	72.013	2.323	2.204	-5,14%
A11	9,0	17	39.616	2.418	42.051	49.955	1.611	1.356	-15,80%

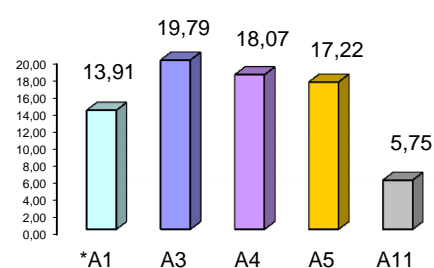
Udio vozila po kategorijama			
oznaka	laka vozila (%)	teška vozila (%)	motocikli (%)
*A1	86,06	13,91	0,04
A3	80,19	19,79	0,02
A4	81,89	18,07	0,04
A5	82,76	17,22	0,03
A11	94,21	5,75	0,04



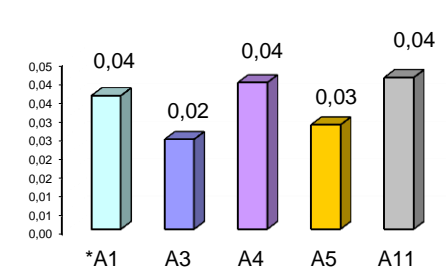
Udio lakih vozila na svim autocestama (%)



Udio teških vozila na svim autocestama (%)



Udio motocikala na svim autocestama (%)



° PMDP - prosječni mjesečni dnevni promet

laka vozila - osobna vozila, osobna vozila s prikolicom, kombiji; teška vozila - kamioni, kamioni s prikolicom, tegljači, autobusi

**Napomena:** točnost podataka sukladna je točnosti instaliranih klasifikatora