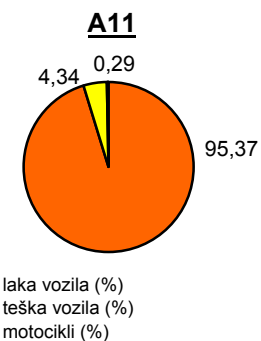
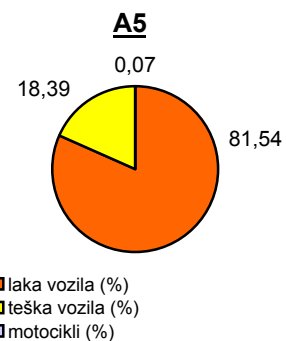
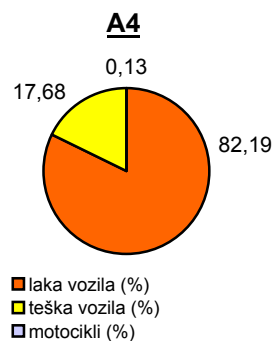
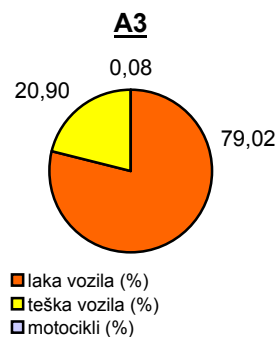
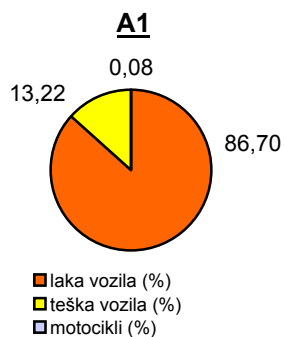


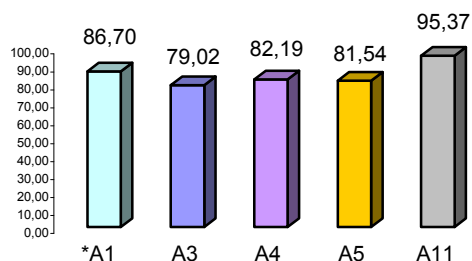
## Promet na autocestama u nadležnosti HAC-a u mjesecu OŽUJKU 2012. godine

Autocesta		OSTVARENI PROMET					Usporedba 2012./2011.		
oznaka	duljina u km	broj motocikala	broj lakih vozila	broj teških vozila	ukupno 2012.	ukupno 2011.	°PMDP 2011.	°PMDP 2012.	odnos prometa 2012./2011.
*A1	399,8	123	140.701	21.447	162.271	154.359	4.979	5.235	5,13%
A3	306,4	373	350.128	92.592	443.093	436.170	14.070	14.293	1,59%
A4	96,4	365	229.866	49.440	279.671	272.289	8.784	9.022	2,71%
A5	53,6	50	58.716	13.247	72.013	74.826	2.414	2.323	-3,76%
A11	9,0	145	47.644	2.166	49.955	55.275	1.783	1.611	-9,62%

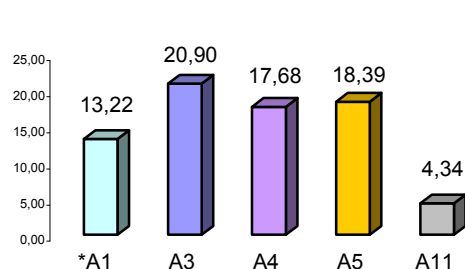
Udio vozila po kategorijama			
oznaka	laka vozila (%)	teška vozila (%)	motocikli (%)
*A1	86,70	13,22	0,08
A3	79,02	20,90	0,08
A4	82,19	17,68	0,13
A5	81,54	18,39	0,07
A11	95,37	4,34	0,29



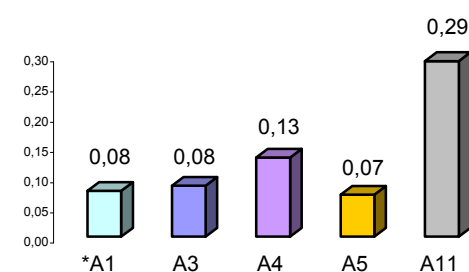
Udio lakih vozila na svim autocestama (%)



Udio teških vozila na svim autocestama (%)



Udio motocikala na svim autocestama (%)



\* A1 od čvora Bosiljevo II do čvora Vrgorac (dionica Ravča - Vrgorac puštena je u promet 30.06.2011. godine)

° PMDP - prosječni mjesečni dnevni promet

laka vozila - osobna vozila, osobna vozila s prikolicom, kombiji; teška vozila - kamioni, kamioni s prikolicom, tegljači, autobusi

**Napomena:** točnost podataka sukladna je točnosti instaliranih klasifikatora