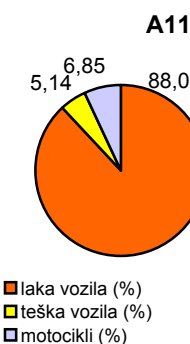
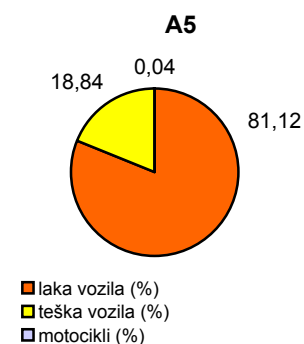
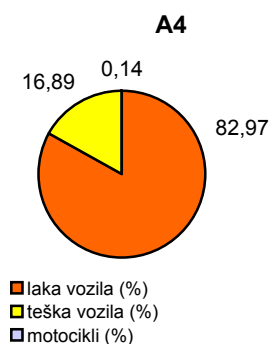
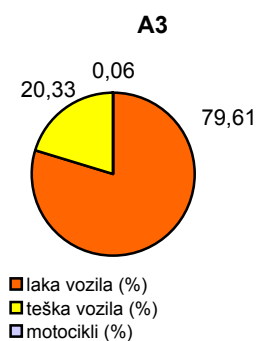
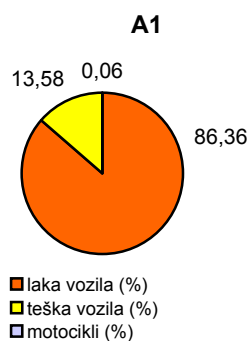


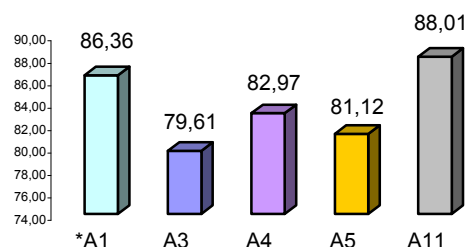
Promet na autocestama u nadležnosti HAC-a u mjesecu OŽUJKU 2010. godine

Autocesta		OSTVARENI PROMET					Usporedba 2010./2009.		
oznaka	duljina u km	broj motocikala	broj lakih vozila	broj teških vozila	ukupno 2009.	ukupno 2010.	°PMDP 2009.	°PMDP 2010.	porast '10./'09.
*A1	390,1	93	135.957	21.372	155.930	157.422	5.030	5.078	100,96
A3	306,4	275	354.334	90.493	445.501	445.102	14.371	14.358	99,91
A4	96,4	381	233.246	47.492	314.154	281.119	10.134	9.068	89,48
A5	53,6	31	60.049	13.949	80.910	74.029	2.610	2.388	91,50
A11	9,0	2.375	30.522	1.784	-	34.681	-	1.119	-

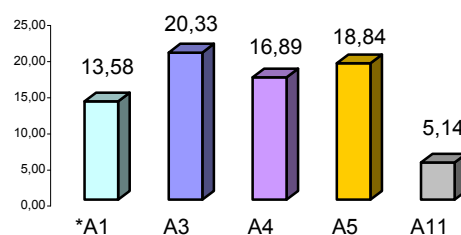
Udio vozila po kategorijama			
oznaka	laka vozila (%)	teška vozila (%)	motocikli (%)
*A1	86,36	13,58	0,06
A3	79,61	20,33	0,06
A4	82,97	16,89	0,14
A5	81,12	18,84	0,04
A11	88,01	5,14	6,85



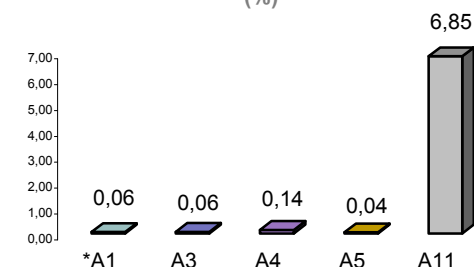
Udio lakih vozila na svim autocestama (%)



Udio teških vozila na svim autocestama (%)



Udio motocikala na svim autocestama (%)



* A1 od čv. Bosiljevo II - čv. Ravča

° PMDP - prosječni mjesečni dnevni promet

laka vozila - osobna vozila, osobna vozila s prikolicom, kombiji; teška vozila - kamioni, kamioni s prikolicom, tegljači, autobusi