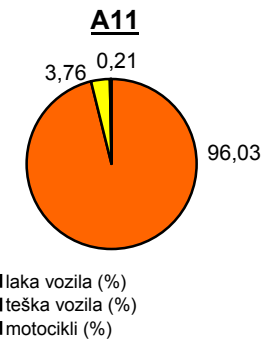
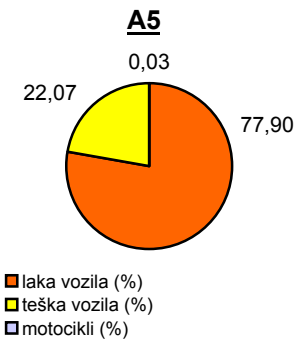
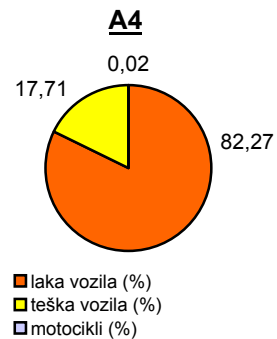
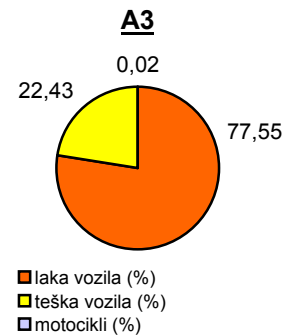
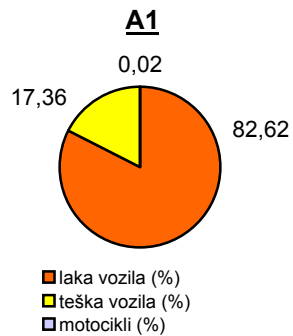


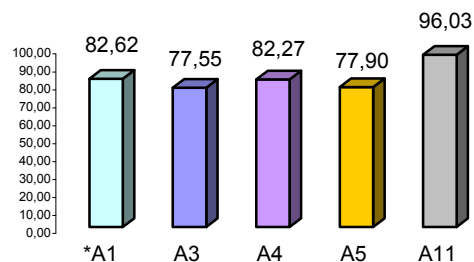
Promet na autocestama u nadležnosti HAC-a u mjesecu VELJAČI 2012. godine

Autocesta		OSTVARENI PROMET					Usporedba 2012./2011.		
oznaka	duljina u km	broj motocikala	broj lakih vozila	broj teških vozila	ukupno 2012.	ukupno 2011.	°PMDP 2011.	°PMDP 2012.	odnos prometa 2012./2011.
*A1	399,8	14	75.692	15.898	91.604	124.909	4.461	3.159	-29,19%
A3	306,4	66	247.132	71.481	318.679	376.946	13.462	10.989	-18,37%
A4	96,4	50	166.755	35.908	202.713	232.794	8.314	6.990	-15,92%
A5	53,6	17	43.710	12.386	56.113	62.101	2.218	1.935	-12,76%
A11	9,0	75	34.641	1.358	36.074	46.878	1.674	1.244	-25,70%

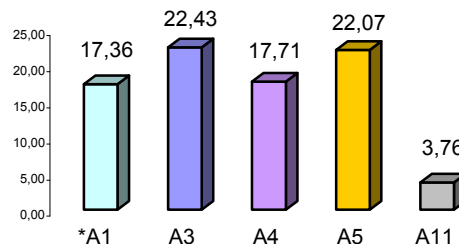
Udio vozila po kategorijama			
oznaka	laka vozila (%)	teška vozila (%)	motocikli (%)
*A1	82,62	17,36	0,02
A3	77,55	22,43	0,02
A4	82,27	17,71	0,02
A5	77,90	22,07	0,03
A11	96,03	3,76	0,21



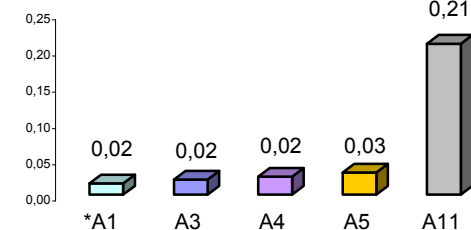
Udio lakih vozila na svim autocestama (%)



Udio teških vozila na svim autocestama (%)



Udio motocikala na svim autocestama (%)



* A1 od čvora Bosiljevo II do čvora Vrgorac (dionica Ravča - Vrgorac puštena je u promet 30.06.2011. godine)

° PMDP - prosječni mjesečni dnevni promet

laka vozila - osobna vozila, osobna vozila s prikolicom, kombiji; teška vozila - kamioni, kamioni s prikolicom, tegljači, autobusi

Napomena: točnost podataka sukladna je točnosti instaliranih klasifikatora