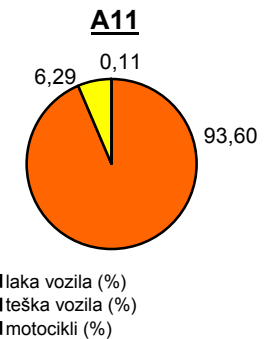
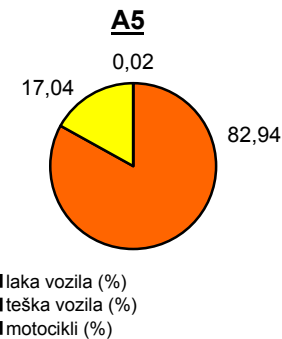
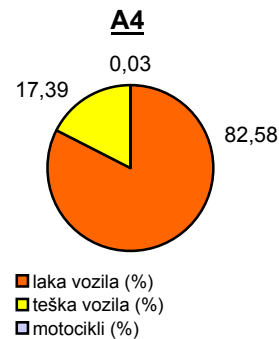
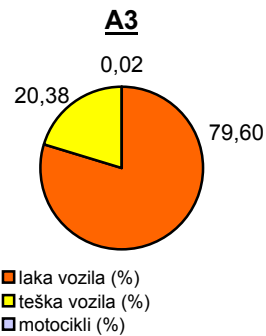
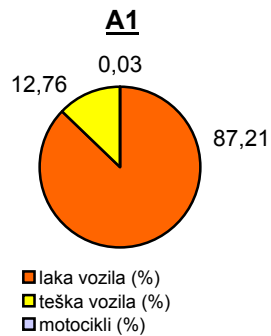


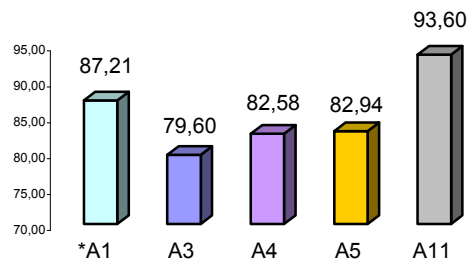
Promet na autocestama u nadležnosti HAC-a u mjesecu VELJAČI 2011. godine

Autocesta		OSTVARENI PROMET					Usporedba 2010./2011.		
oznaka	duljina u km	broj motocikala	broj lakih vozila	broj teških vozila	ukupno 2011.	ukupno 2010.	°PMDP 2010.	°PMDP 2011.	odnos prometa 2010./2011.
*A1	390,1	40	108.930	15.939	124.909	120.223	4.294	4.461	3,90%
A3	306,4	64	300.066	76.816	376.946	357.751	12.777	13.462	5,37%
A4	96,4	60	192.249	40.485	232.794	229.434	8.194	8.314	1,46%
A5	53,6	10	51.509	10.582	62.101	60.156	2.148	2.218	3,23%
A11	9,0	50	43.877	2.951	46.878	25.903	925	1.674	80,98%

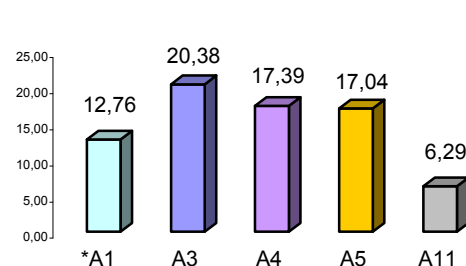
Udio vozila po kategorijama			
oznaka	laka vozila (%)	teška vozila (%)	motocikli (%)
*A1	87,21	12,76	0,03
A3	79,60	20,38	0,02
A4	82,58	17,39	0,03
A5	82,94	17,04	0,02
A11	93,60	6,29	0,11



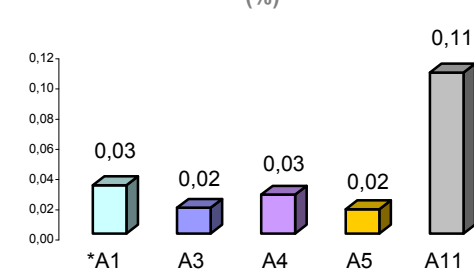
Udio lakih vozila na svim autocestama (%)



Udio teških vozila na svim autocestama (%)



Udio motocikala na svim autocestama (%)



* A1 od čv. Bosiljevo II - čv. Ravča

° PMDP - prosječni mjesečni dnevni promet

laka vozila - osobna vozila, osobna vozila s prikolicom, kombiji; teška vozila - kamioni, kamioni s prikolicom, tegljači, autobusi

Napomena: točnost podataka sukladna je točnosti instaliranih klasifikatora