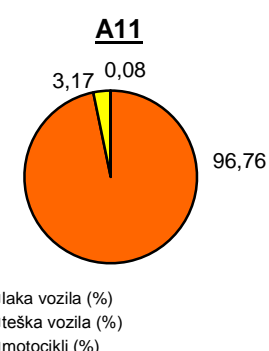
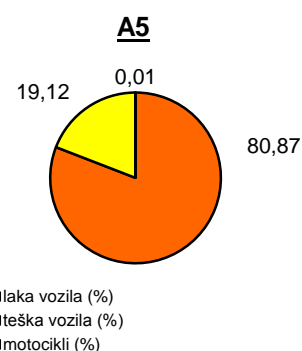
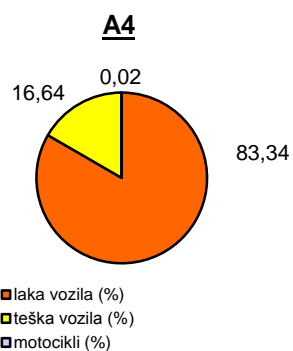
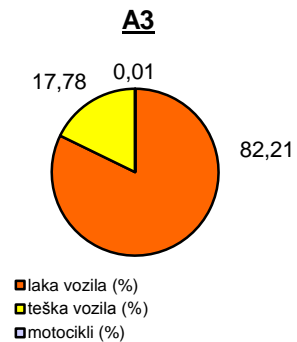
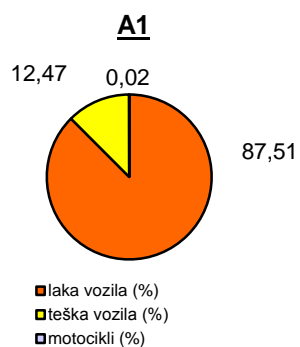


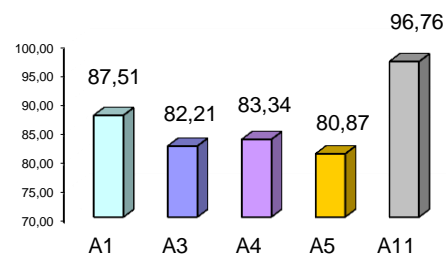
## Promet na autocestama u nadležnosti HAC-a u mjesecu PROSINCU 2013. godine

Autocesta		OSTVARENI PROMET					Usporedba 2013./2012.		
oznaka	duljina u km	broj motocikala	broj lakih vozila	broj teških vozila	ukupno 2013.	ukupno 2012.	°PMDP 2012.	°PMDP 2013.	odnos prometa 2013./2012.
A1	416,8	29	129.954	18.520	148.503	135.765	4.380	4.790	9,37%
A3	306,4	48	389.140	84.155	473.343	439.090	14.164	15.269	7,80%
A4	96,4	43	204.851	40.900	245.794	233.443	7.530	7.929	5,30%
A5	53,6	7	56.344	13.321	69.672	66.698	2.152	2.247	4,44%
A11	9,0	38	47.802	1.564	49.404	40.520	1.307	1.594	21,93%

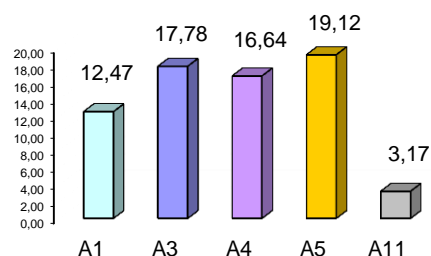
Udio vozila po kategorijama			
oznaka	laka vozila (%)	teška vozila (%)	motocikli (%)
A1	87,51	12,47	0,02
A3	82,21	17,78	0,01
A4	83,34	16,64	0,02
A5	80,87	19,12	0,01
A11	96,76	3,17	0,08



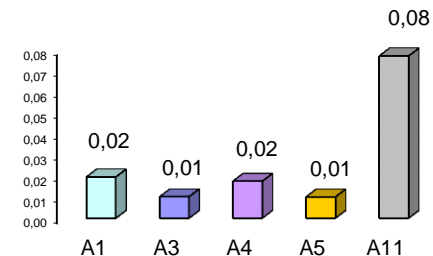
Udio lakih vozila na svim autocestama (%)



Udio teških vozila na svim autocestama (%)



Udio motocikala na svim autocestama (%)



° PMDP - prosječni mjesečni dnevni promet

laka vozila - osobna vozila, osobna vozila s prikolicom, kombiji; teška vozila - kamioni, kamioni s prikolicom, tegljači, autobusi

**Napomena:** točnost podataka sukladna je točnosti instaliranih klasifikatora