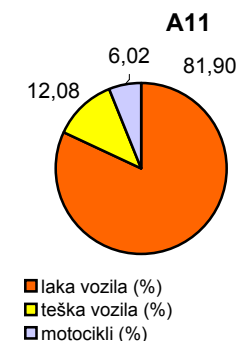
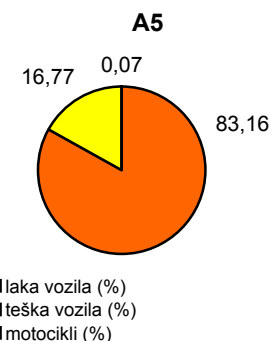
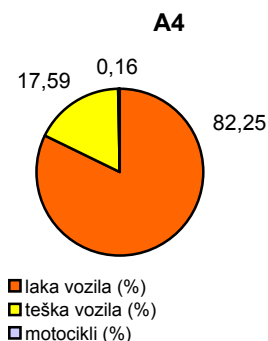
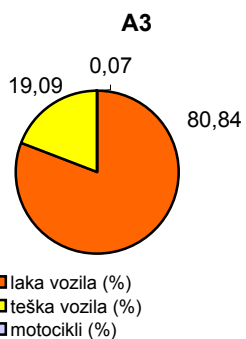
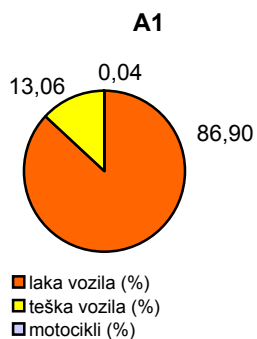


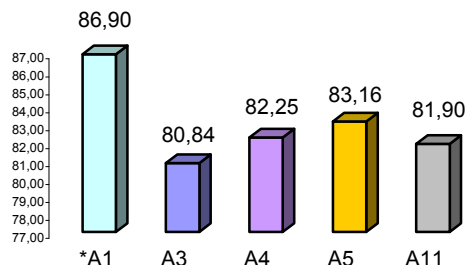
Promet na autocestama u nadležnosti HAC-a u mjesecu STUDENOM 2010. godine

Autocesta	duljina u km	OSTVARENI PROMET					Usporedba 2010./2009.		
		broj motocikala	broj lakih vozila	broj teških vozila	ukupno 2009.	ukupno 2010.	°PMDP 2009.	°PMDP 2010.	porast '10./'09.
*A1	390,1	73	142.934	21.481	155.640	164.488	5.188	5.483	105,68
A3	306,4	310	375.855	88.779	458.640	464.944	15.288	15.498	101,37
A4	96,4	414	216.772	46.367	299.340	263.553	9.978	8.785	88,04
A5	53,6	53	62.212	12.548	76.560	74.813	2.552	2.494	97,72
A11	9,0	3.502	47.620	7.025	36.420	58.147	1.214	1.938	159,66

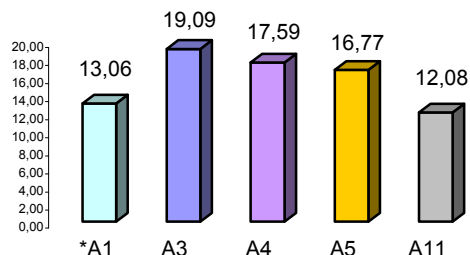
Udio vozila po kategorijama			
oznaka	laka vozila (%)	teška vozila (%)	motocikli (%)
*A1	86,90	13,06	0,04
A3	80,84	19,09	0,07
A4	82,25	17,59	0,16
A5	83,16	16,77	0,07
A11	81,90	12,08	6,02



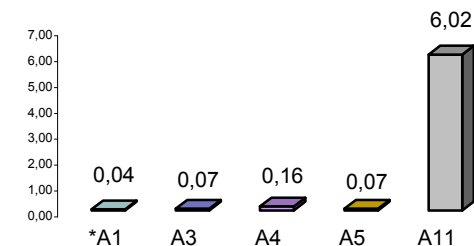
Udio lakih vozila na svim autocestama (%)



Udio teških vozila na svim autocestama (%)



Udio motocikala na svim autocestama (%)



* A1 od čvora Bosiljevo II - čvora Ravča

° PMDP - prosječni mjesečni dnevni promet

laka vozila - osobna vozila, osobna vozila s prikolicom, kombiji; teška vozila - kamioni, kamioni s prikolicom, tegljači, autobusi