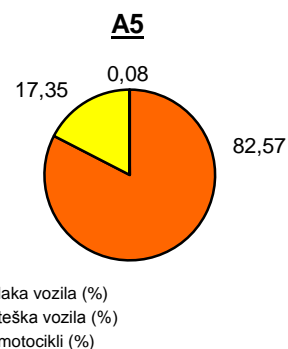
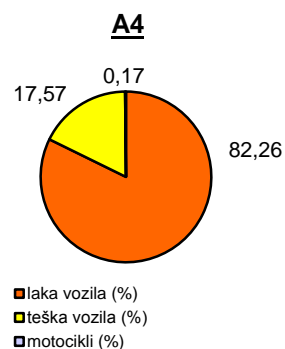
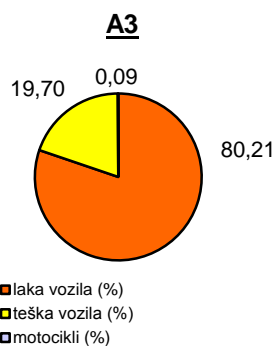
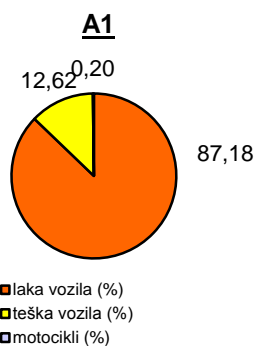


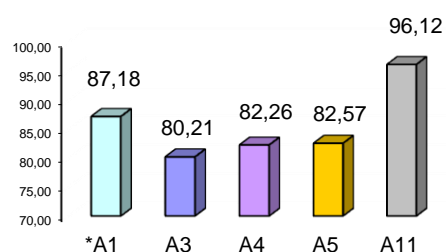
Promet na autocestama u nadležnosti HAC-a u mjesecu LISTOPADU 2012. godine

Autocesta		OSTVARENI PROMET					Usporedba 2012./2011.		
oznaka	duljina u km	broj motocikala	broj lakih vozila	broj teških vozila	ukupno 2012.	ukupno 2011.	°PMDP 2011.	°PMDP 2012.	odnos prometa 2012./2011.
*A1	399,8	405	176.647	25.576	202.628	216.815	6.994	6.536	-6,54%
A3	306,4	467	405.478	99.574	505.519	530.230	17.104	16.307	-4,66%
A4	96,4	487	237.207	50.666	288.360	325.420	10.497	9.302	-11,39%
A5	53,6	64	65.813	13.831	79.708	85.858	2.770	2.571	-7,16%
A11	9,0	256	59.984	2.165	62.405	65.507	2.113	2.013	-4,74%

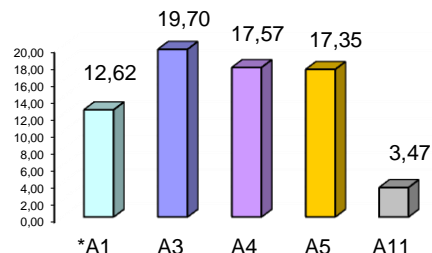
Udio vozila po kategorijama			
oznaka	laka vozila (%)	teška vozila (%)	motocikli (%)
*A1	87,18	12,62	0,20
A3	80,21	19,70	0,09
A4	82,26	17,57	0,17
A5	82,57	17,35	0,08
A11	96,12	3,47	0,41



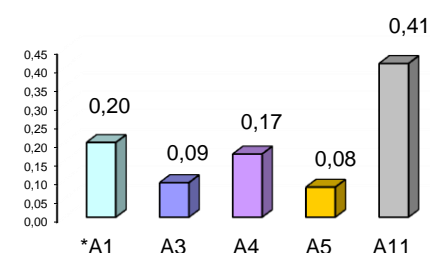
Udio lakih vozila na svim autocestama (%)



Udio teških vozila na svim autocestama (%)



Udio motocikala na svim autocestama (%)



° PMDP - prosječni mjesečni dnevni promet

laka vozila - osobna vozila, osobna vozila s prikolicom, kombiji; teška vozila - kamioni, kamioni s prikolicom, tegljači, autobusi

Napomena: točnost podataka sukladna je točnosti instaliranih klasifikatora

