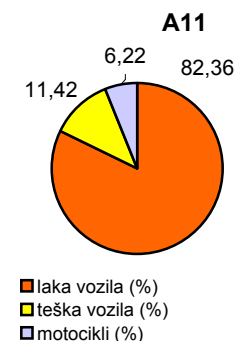
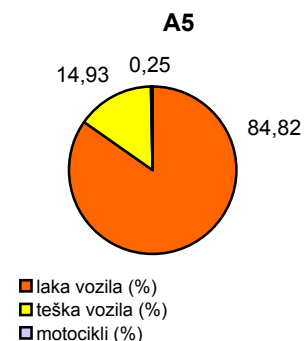
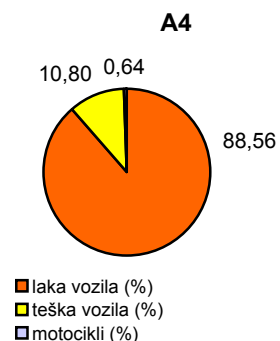
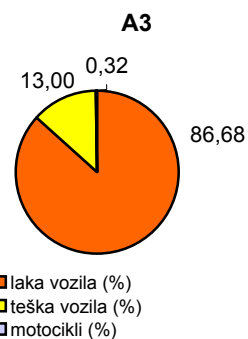
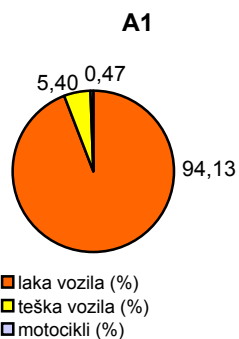


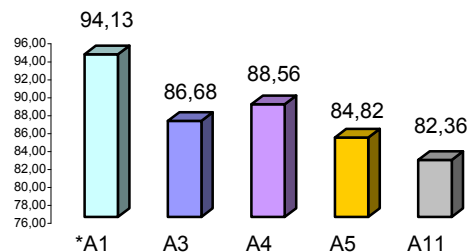
Promet na autocestama u nadležnosti HAC-a u mjesecu SRPNJU 2010. godine

Autocesta		OSTVARENI PROMET					Usporedba 2010./2009.		
oznaka	duljina u km	broj motocikala	broj lakih vozila	broj teških vozila	ukupno 2009.	ukupno 2010.	°PMDP 2009.	°PMDP 2010.	porast '10./'09.
*A1	390,1	3.454	685.416	39.353	663.927	728.223	21.417	23.491	109,68
A3	306,4	2.410	643.975	96.601	729.213	742.986	23.523	23.967	101,89
A4	96,4	3.280	454.845	55.493	553.257	513.618	17.847	16.568	92,84
A5	53,6	223	75.715	13.324	110.267	89.262	3.557	2.879	80,95
A11	9,0	2.768	36.639	5.081	46.748	44.488	1.508	1.435	95,17

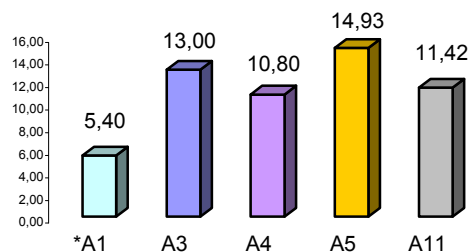
Udio vozila po kategorijama			
oznaka	laka vozila (%)	teška vozila (%)	motocikli (%)
*A1	94,13	5,40	0,47
A3	86,68	13,00	0,32
A4	88,56	10,80	0,64
A5	84,82	14,93	0,25
A11	82,36	11,42	6,22



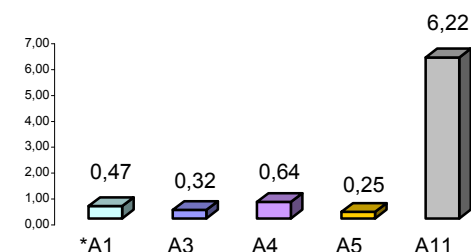
Udio lakih vozila na svim autocestama (%)



Udio teških vozila na svim autocestama (%)



Udio motocikala na svim autocestama (%)



* A1 od čvora Bosiljevo II - čvora Ravča

° PMDP - prosječni mjesečni dnevni promet

laka vozila - osobna vozila, osobna vozila s prikolicom, kombiji; teška vozila - kamioni, kamioni s prikolicom, tegljači, autobusi