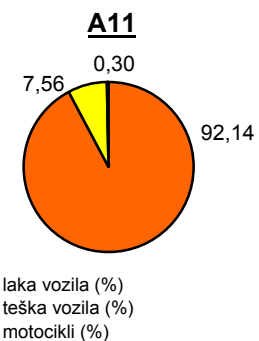
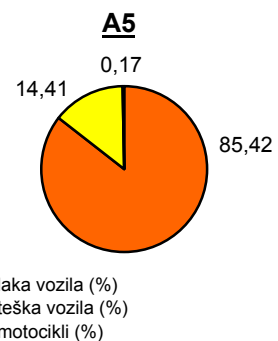
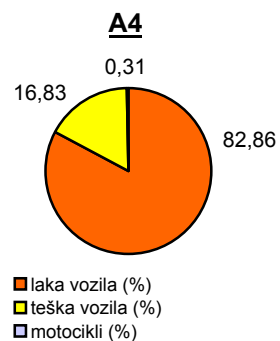
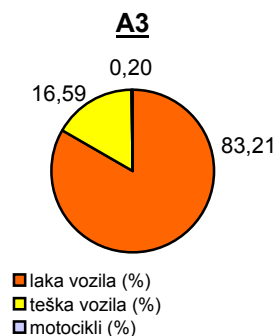
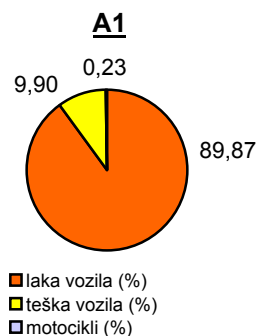


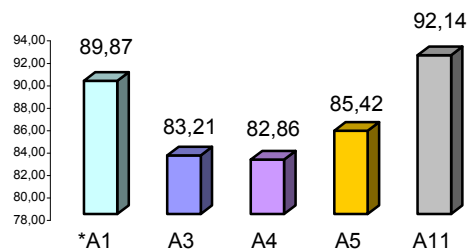
Promet na autocestama u nadležnosti HAC-a u mjesecu TRAVNJU 2011. godine

Autocesta	oznaka	duljina u km	OSTVARENI PROMET				Usporedba 2011./2010.			
			broj motocikala	broj lakih vozila	broj teških vozila	ukupno 2011.	ukupno 2010.	°PMDP 2010.	°PMDP 2011.	odnos prometa 2011./2010.
*A1		390,1	544	212.198	23.385	236.127	225.901	7.530	7.871	4,53%
A3		306,4	1.097	460.177	91.730	553.004	557.875	18.596	18.433	-0,87%
A4		96,4	894	238.552	48.452	287.898	296.429	9.881	9.597	-2,88%
A5		53,6	132	68.212	11.511	79.855	78.676	2.623	2.662	1,50%
A11		9,0	215	65.758	5.395	71.368	41.018	1.367	2.379	73,99%

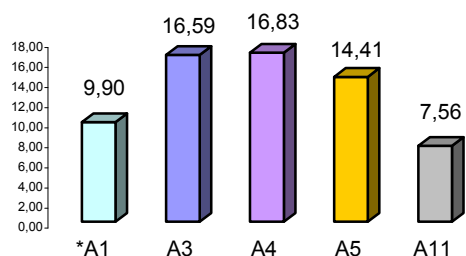
Udio vozila po kategorijama			
oznaka	laka vozila (%)	teška vozila (%)	motocikli (%)
*A1	89,87	9,90	0,23
A3	83,21	16,59	0,20
A4	82,86	16,83	0,31
A5	85,42	14,41	0,17
A11	92,14	7,56	0,30



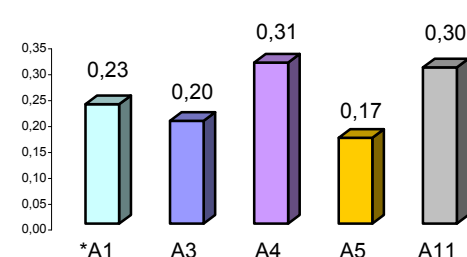
Udio lakih vozila na svim autocestama (%)



Udio teških vozila na svim autocestama (%)



Udio motocikala na svim autocestama (%)



* A1 od čv. Bosiljevo II - čv. Ravča

° PMDP - prosječni mjesečni dnevni promet

laka vozila - osobna vozila, osobna vozila s prikolicom, kombiji; teška vozila - kamioni, kamioni s prikolicom, tegljači, autobusi

Napomena: točnost podataka sukladna je točnosti instaliranih klasifikatora