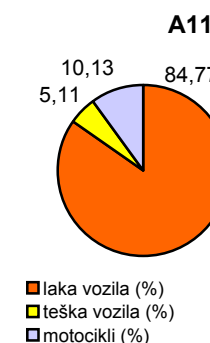
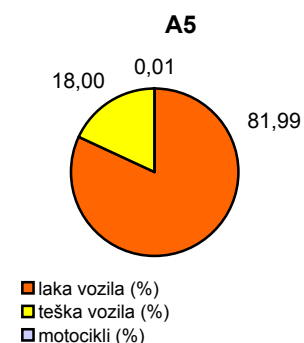
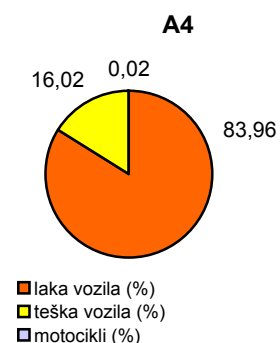
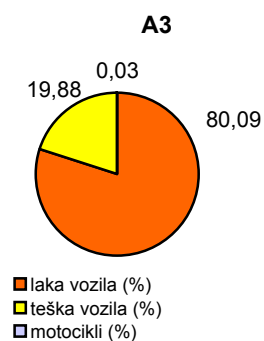
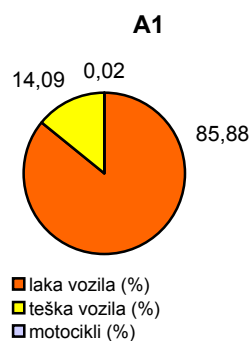


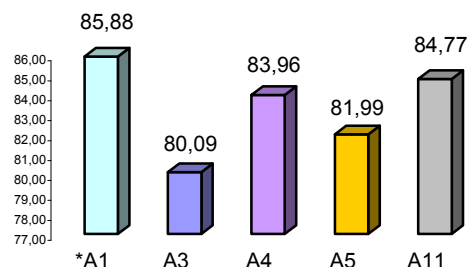
Promet na autocestama u nadležnosti HAC-a u mjesecu VELJAČI 2010. godine

Autocesta	duljina u km	OSTVARENI PROMET					Usporedba 2010./2009.		
		broj motocikala	broj lakih vozila	broj teških vozila	ukupno 2009.	ukupno 2010.	°PMDP 2009.	°PMDP 2010.	porast '10./'09.
*A1	390,1	29	103.253	16.941	121.506	120.223	4.339	4.294	98,94
A3	306,4	101	286.532	71.118	374.584	357.751	13.378	12.777	95,51
A4	96,4	49	192.621	36.764	236.244	229.434	8.437	8.194	97,12
A5	53,6	8	49.322	10.826	67.256	60.156	2.402	2.148	89,44
A11	9,0	2.623	21.957	1.323	-	25.903	-	925	-

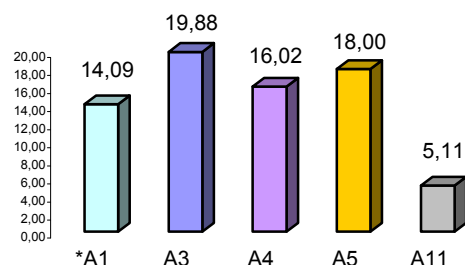
Udio vozila po kategorijama			
oznaka	laka vozila (%)	teška vozila (%)	motocikli (%)
*A1	85,88	14,09	0,02
A3	80,09	19,88	0,03
A4	83,96	16,02	0,02
A5	81,99	18,00	0,01
A11	84,77	5,11	10,13



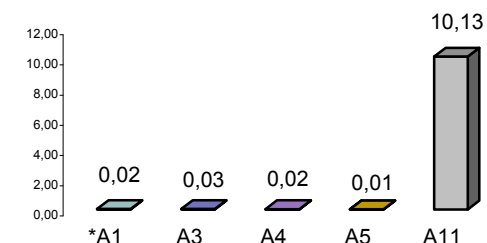
Udio lakih vozila na svim autocestama (%)



Udio teških vozila na svim autocestama (%)



Udio motocikala na svim autocestama (%)



* A1 od čv. Bosiljevo II - čv. Ravča

° PMDP - prosječni mjesečni dnevni promet

laka vozila - osobna vozila, osobna vozila s prikolicom, kombiji; teška vozila - kamioni, kamioni s prikolicom, tegljači, autobusi