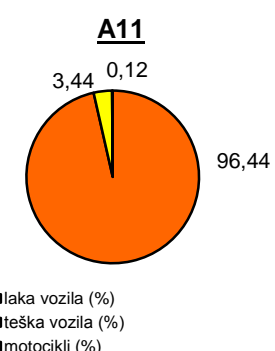
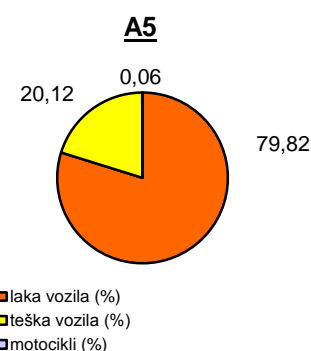
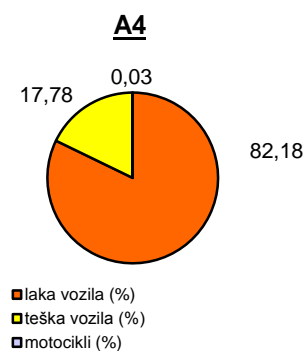
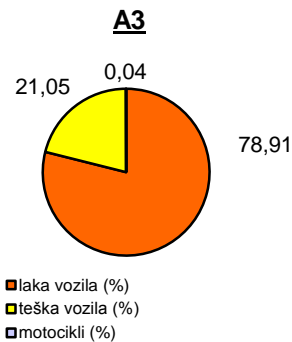
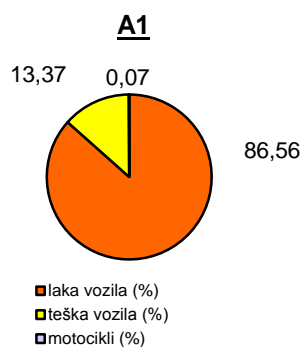


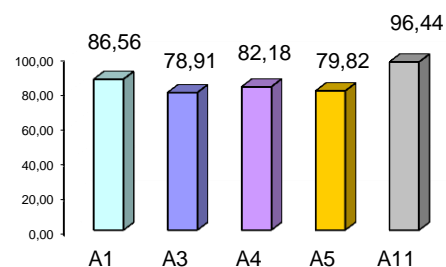
Promet na autocestama u nadležnosti HAC-a u mjesecu STUDENOM 2013. godine

Autocesta		OSTVARENI PROMET					Usporedba 2013./2012.		
oznaka	duljina u km	broj motocikala	broj lakih vozila	broj teških vozila	ukupno 2013.	ukupno 2012.	°PMDP 2012.	°PMDP 2013.	odnos prometa 2013./2012.
A1	399,8	104	128.199	19.795	148.098	153.216	5.107	4.937	-3,34%
A3	306,4	198	360.927	96.258	457.383	446.964	14.899	15.246	2,33%
A4	96,4	88	214.411	46.400	260.899	263.602	8.787	8.697	-1,03%
A5	53,6	42	56.812	14.324	71.178	69.494	2.316	2.373	2,44%
A11	9,0	64	52.604	1.876	54.544	50.759	1.692	1.818	7,45%

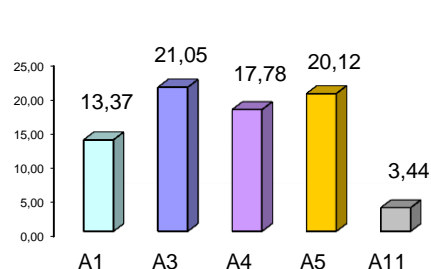
Udio vozila po kategorijama			
oznaka	laka vozila (%)	teška vozila (%)	motocikli (%)
A1	86,56	13,37	0,07
A3	78,91	21,05	0,04
A4	82,18	17,78	0,03
A5	79,82	20,12	0,06
A11	96,44	3,44	0,12



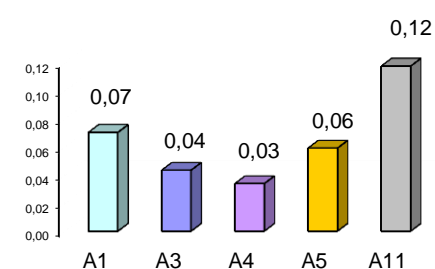
Udio lakih vozila na svim autocestama (%)



Udio teških vozila na svim autocestama (%)



Udio motocikala na svim autocestama (%)



° PMDP - prosječni mjesečni dnevni promet

laka vozila - osobna vozila, osobna vozila s prikolicom, kombiji; teška vozila - kamioni, kamioni s prikolicom, tegljači, autobusi

Napomena: točnost podataka sukladna je točnosti instaliranih klasifikatora